

People in Motion

Building Talents

Erika Perez
HR Director South Europe



ITT

ENGINEERED FOR LIFE



The markets we serve...



Energy

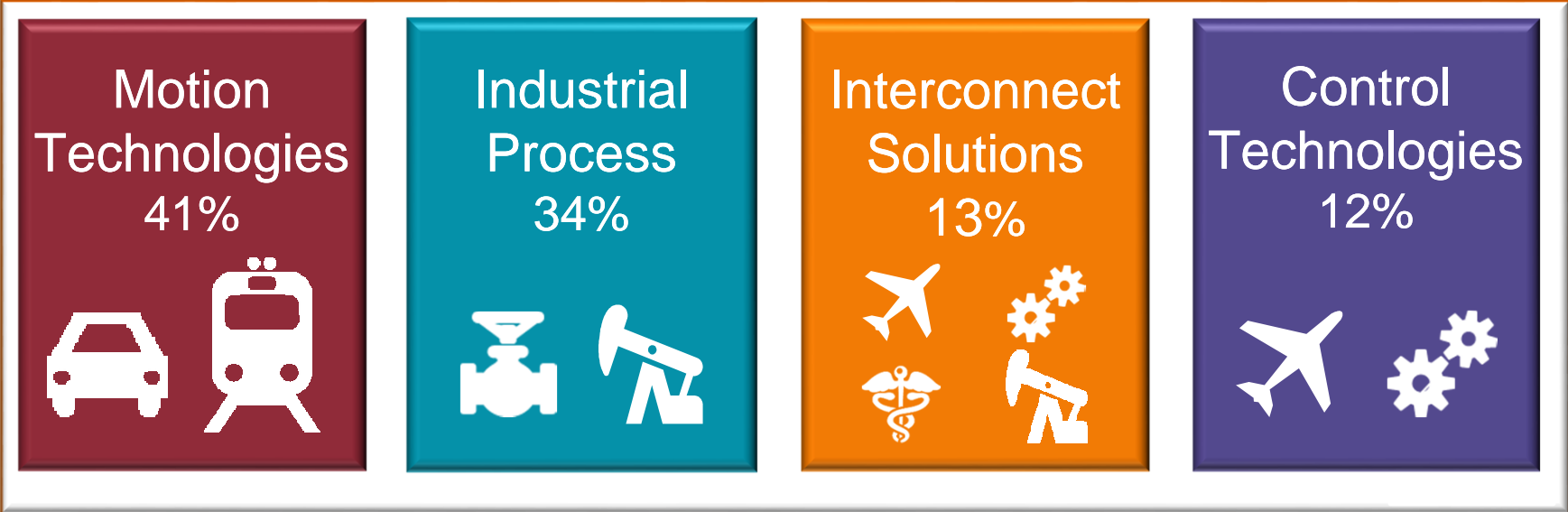


Transportation



Industrial

Balanced & diverse business mix



Leveraging Our Strong Foundation & Diversification

Focused on Strategic Execution

Safety, reliability, comfort...



Our products and solutions may be invisible, but they make an invaluable contribution to modern life.

Your life. My life. Our life.









History of ITT timeline

1920

The Original ITT

ITT begins life as International Telephone & Telegraph, a Puerto Rico-based phone company.

1960

The Acquisition Years

Under CEO Harold Geneen, ITT acquires companies ranging from hotel chains to bakeries at the rate of one every two weeks and earns a reputation as one of the world's first true conglomerates.

1995

The First Split

In 1995, ITT splits into three companies, one keeping the hotel and gaming business and another the insurance business. ITT Industries retains the industrial businesses, and in 2006, reclaims the ITT Corporation name.

2011

The Second Split

In 2011, history repeats itself as ITT splits once again into three publicly traded companies. The defense and water businesses are spun off and ITT Corporation continues as a multi-industrial company serving the energy, transportation and industrial end markets

2012 and beyond

The Value-Creating Years

ITT delivers a track record of strong performance and results while consistently investing for growth. Looking ahead, ITT will continue to drive a multi-industry strategy keenly focused on long-term growth and value creation for shareowners, and to grow by expanding market positions, optimizing execution and deploying capital effectively.

1840s-1960s Our Brands Come to Life

Industrial Pumps and Valves: In 1848, Seabury Gould starts manufacturing the world's first all-iron pumps. Goulds Pumps merges with ITT in 1997 to form the world's largest fluid technology equipment company, with a focus on pumps and valves for industrial applications.

Shock Absorbers: In 1857, KONI begins selling leather horse harnesses and upholstery in the Netherlands. It later switches focus to the automotive market and by 1932 is producing friction shock absorbers. KONI joins the ITT family in 1972.

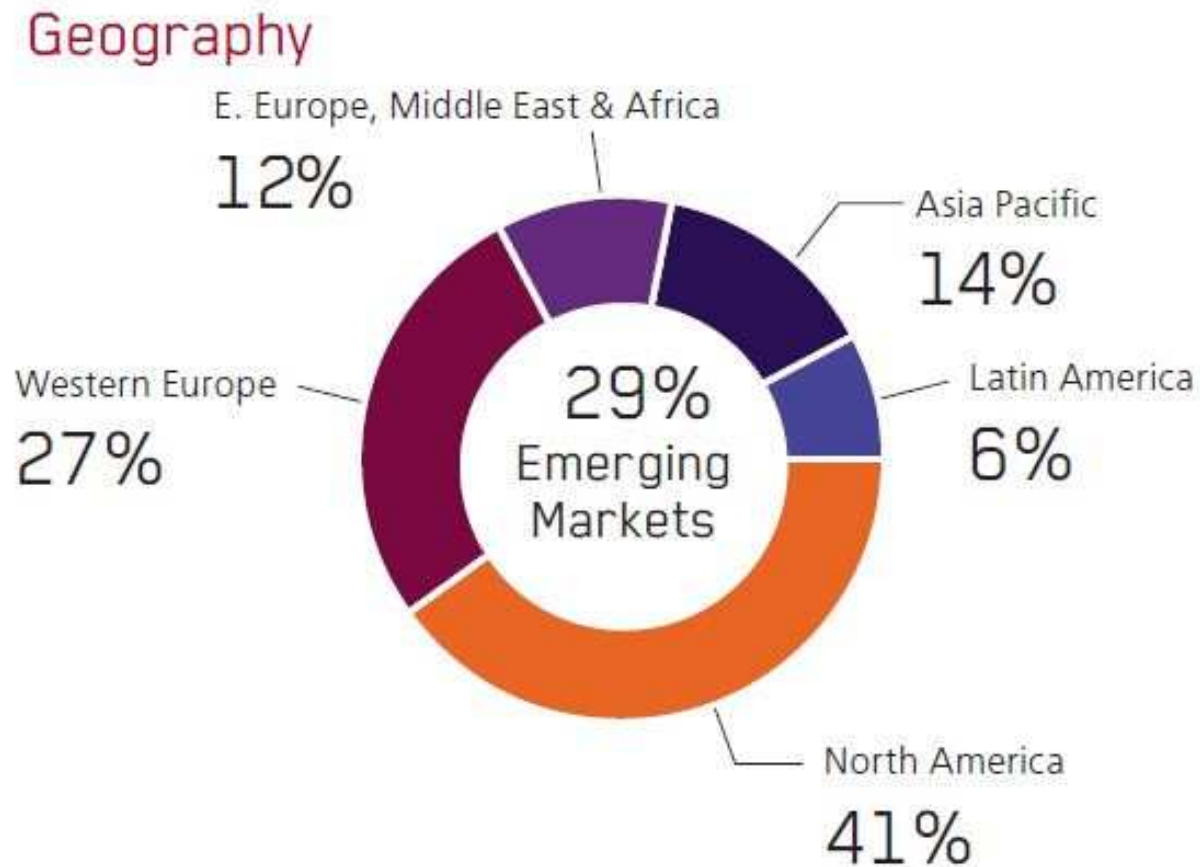
Electronic Connectors: In 1915, Cannon is founded as a small electrical specialty shop, and its first plug sets the company direction and leads to hundreds of thousands of connector configurations over the years. Cannon is acquired by ITT in 1967.

Motion Control Devices: In 1936, Valve-maker General Controls, including its Aerospace Controls unit, is founded, and 1966 marks the founding of shock absorber maker Integrated Dynamics, which later changes its name to Enidine. These companies become part of ITT in 1963 and 2007, respectively.

Friction Products: In 1950, a friction technologies company is founded in Italy to produce friction materials and brake pads for cars and trucks. The company, which later opens a facility in Barge, joins the ITT family in 1977.



Balanced and Diversified: Geography



Motion Technologies



ITT

ENGINEERED FOR LIFE

ITT Motion Technologies Overview



**Friction
Technologies**

Brake pads



Fine Blanking

Backplates



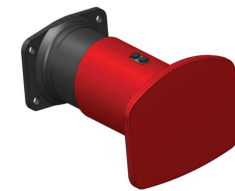
Wolverine

Shimms
Seals & Gaskets



KONI

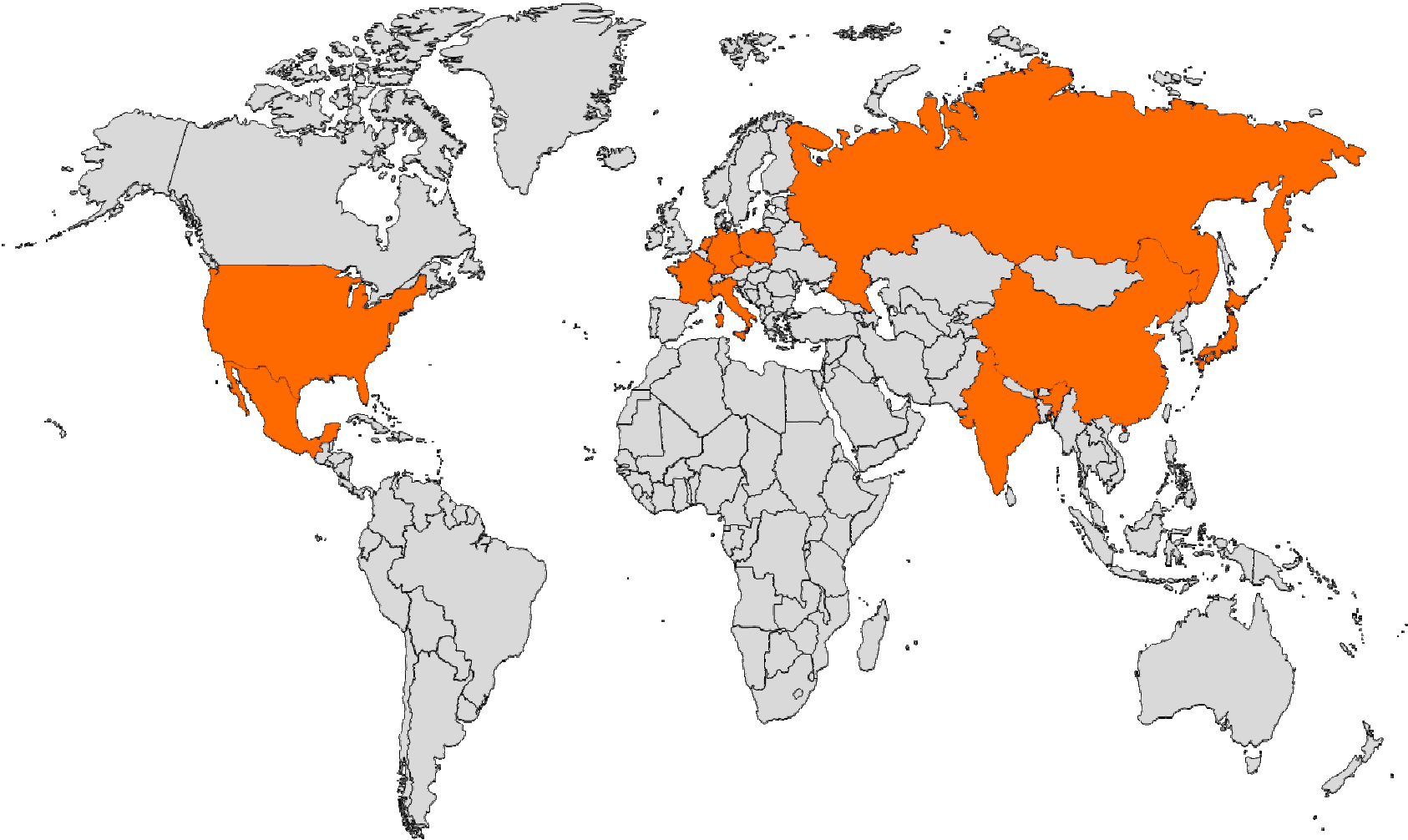
Shock absorbers



Axtone

Buffers & Springs

ITT Motion Technologies Footprint



Global Career in a Global Company



Our Development Actions



People are Central to How we Win

Driving a healthy, high performing culture through our people

Our Principles

- Engage employees around our strategy, purpose and principles

Impeccable character
Bold Thinking
Collective know-how



Our Differentiators

- Further optimizing our execution through Lean and **World Class Manufacturing**
- Expanding our **market share** position through developing innovative leading technologies
- Continuing to deploy our **capital** in the right way to build our market positions

Culture as a Critical Factor in Career Development

the mood elevator

grateful
wise
creative
optimistic
appreciative
understanding
curious
frustrated
irritated
anxious
defensive
judgmental
depressed



appreciation...the glue that holds teams together

"what I appreciate about you is..."



don't assume motives

assume positive intention



be here now

stay curious



coaching and feedback

accountability ladder




Master MASIEO & ITT



13 Trainees since 2012

100% On board in ITT

4 Areas
Maintenance
World Class Manufacturing Operations
Manufacturing & Process Engineering



Master of Advanced Studies
Industrial Engineering and Operations
Fast way to work in excellent companies

MASIEO

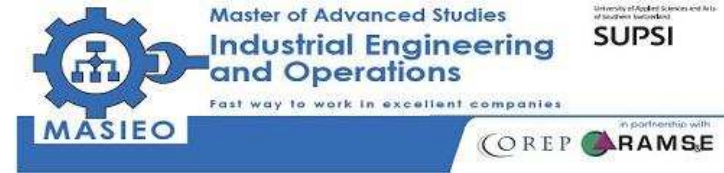
University of Applied Sciences and Arts of Southern Switzerland
SUPSI

in partnership with
COREP **RAMSE**



ITT

Testimonials



“Ho scelto di frequentare il Master MASIEO a fronte della possibilità di abbinare un corso di studi particolarmente formativo a un’esperienza **a diretto contatto con una realtà di produzione**. Questo percorso mi ha permesso di **applicare sul campo** quanto appreso in aula e di acquisire una **visione d’insieme** delle varie funzioni aziendali.”

Massimo Impalà, Edizione 2016

“Il percorso di alternanza studio/lavoro rappresenta un’ottima opportunità per ottenere gli **strumenti utili** ad affrontare in maniera più **consapevole** la vita in azienda.”

Giulia Sali, Edizione 2017

“Ho trovato molto stimolante l’ingresso in ITT tramite il master MASIEO in quanto ho avuto la possibilità di **trattare a livello teorico** le principali tematiche di un’azienda manufacturing e di **applicarle concretamente** .”

Dilanth Torassa, Edizione 2016

“Ho preso in considerazione la possibilità di frequentare il master MASIEO a fronte dell’opportunità di **coniugare parte pratica e parte teorica**, approfondendo tematiche non trattate durante il percorso di studi universitario”

Giuseppina Leonello, Edizione 2017



Who we are looking for?



Aspire...

Up The Game

